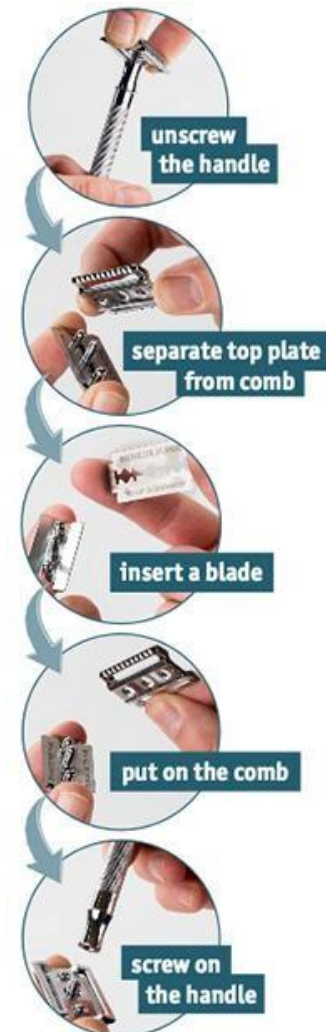


Blade Replacement for your Safety Razor

To change the razor blade of a MERKUR safety razor with a twist knob, please follow these instructions. These steps are specifically designed for our three-piece safety razors.

1. **Unscrewing the handle:** Hold the handle of the safety razor firmly and turn it counterclockwise. This will detach the handle from the comb and cap. Continue turning until the handle is fully unscrewed and can be removed.
2. **Separating the cap and comb:** Carefully separate the cap and comb by pulling them apart. The cap is located on top, while the comb is underneath. Handle both parts with care to avoid any injuries.
3. **Inserting the blade:** Take a new razor blade from its packaging and carefully place it on the blade holder of the cap. Ensure that the holes or slots in the blade align correctly with the retaining pins on the cap for proper positioning.
4. **Attaching the comb:** Place the comb back onto the cap with the blade inserted. Make sure the comb is properly aligned and sits securely on the cap. This ensures a safe and effective shaving experience.
5. **Screwing the handle:** Hold the comb and cap together, then screw the handle back on. Turn the handle clockwise until it is securely attached to the safety razor. Be careful not to overtighten to avoid damaging the mechanism. Ensure everything is firmly in place for safe use.



These steps ensure a safe and efficient blade change for your MERKUR safety razor. Always follow the safety instructions and handle razor blades with care.